

OPERATOR'S MANUAL

Heavy Duty Drag Scraper



Put DIRT in its place.

MODEL
GHDS SERIES

Garfield

SAFETY

- 1. Do not lubricate, adjust, or repair when machine is in motion.***
- 2. Follow all laws when transporting on highways.***
- 3. Never allow personnel to ride on machine.***
- 4. All hydraulically elevated components must be blocked to prevent accidental lowering or just be lowered to the ground when adjustment or repairs are made.***
- 5. Keep all personnel a way from machine while it is being operated or being cycled.***
- 6. Drive slowly over rough ground, side hills, and around curves.***
- 7. OSHA requires that as a farm employer you meet certain requirements. Become familiar with and comply with those requirements.***
- 8. Be certain anyone who operates this machine understands all safety related items.***
- 9. Should hydraulic hoses and/or fittings be accidentally damaged, replace those components immediately for safe operation. Never open hydraulic components under pressure.***
- 10. Always put transport lock in while traveling down the road.***

Garfield

WARRANTY

2

Under the conditions described herein GARFIELD, INC. will within 12 months from the date of purchase on agricultural designed the operated machinery, and 90 days for hire commercial machinery, supply or at GARFIELD'S option, repair any part manufactred and/or workmanship, upon receipt of the damaged part.

GARFIELD components manufactured by companies other than GARFIELD are warranted soley by those companies. Those components include but are not limited to tires, rims belts, hoses, and hydraulics.

GARFIELD will not warrant any part which in GARFIELD'S opinion has failed due to modifications, abuse, misuse, improper maintenance, or due to normal wear.

GARFIELD will pay no further expenses, including but not limited to transportation, labor and loss of time income, or crops.

This warranty is made expressly in place of all other guarantees or warranties, expressed or implied.

Garfield

FORWARD

This manual is written as a guide for owners and operators of the GARFIELD equipment, read it carefully and follow the suggestions which are made. Keep this manual in a convenient place for quick, easy reference and use it whenever questions come up.

Fill in the following information now for future reference and convenience. Always give this information to your Dealer when ordering new parts, or asking for help. Your GARFIELD dealer is your primary source for information, however, if at any time it is necessary for you to write directly to GARFIELD, INC. for additional information, give the model and serial number of your machine and as much descriptive information as possible. This will help us to do a better job of solving your problem and/or getting parts to you.

MODEL NO. _____

SERIAL NO. _____

DATE OF PURCHASE _____

NAME AND ADDRESS _____

Phone# _____

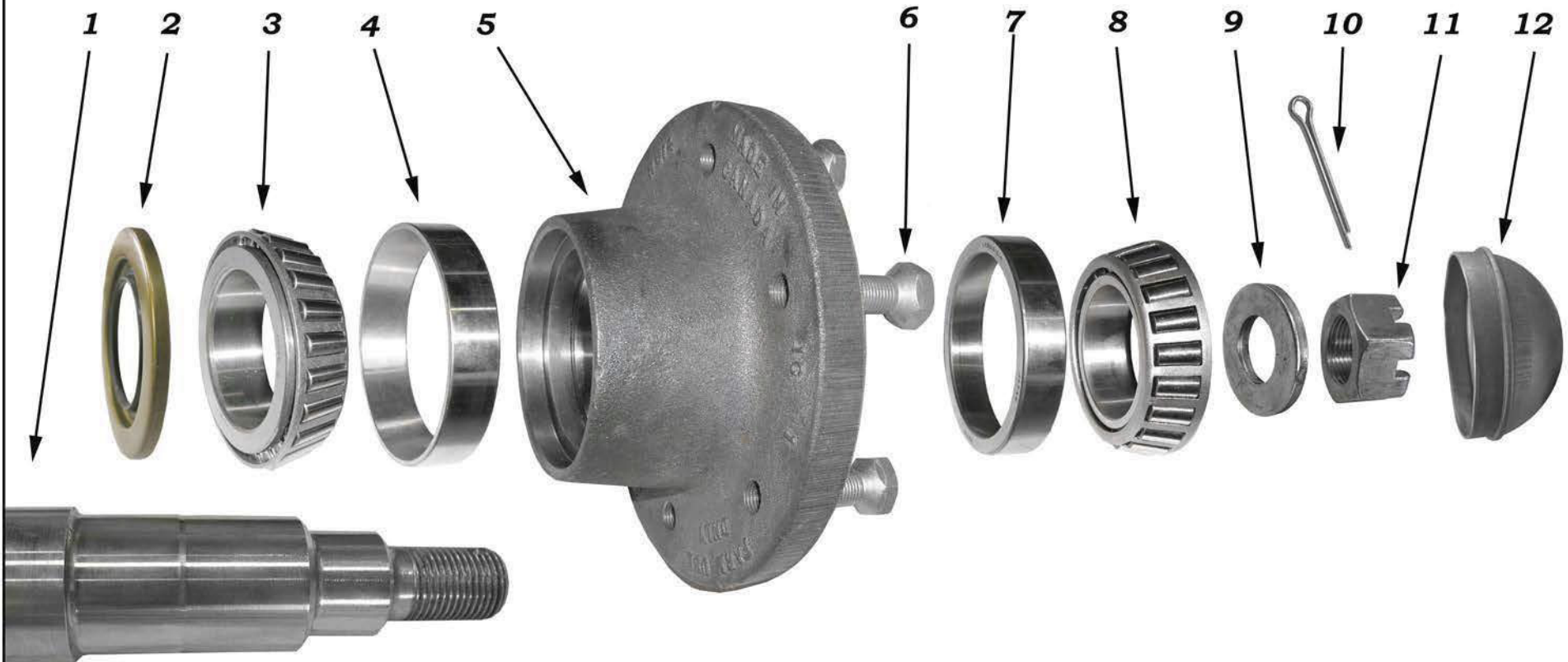
It is the policy of GARFIELD, INC. to make improvements on our product. GARFIELD, INC. reserves the right to make these improvements without incurring any obligation to those machines already in the field. Years of research and development combined with experience gained through close contact with operators has been drawn upon designing your products.

GARFIELD, INC.
500 W. SOUTHGATE
ENID, OK 73703
580-233-1410
800-382-4478

Garfield

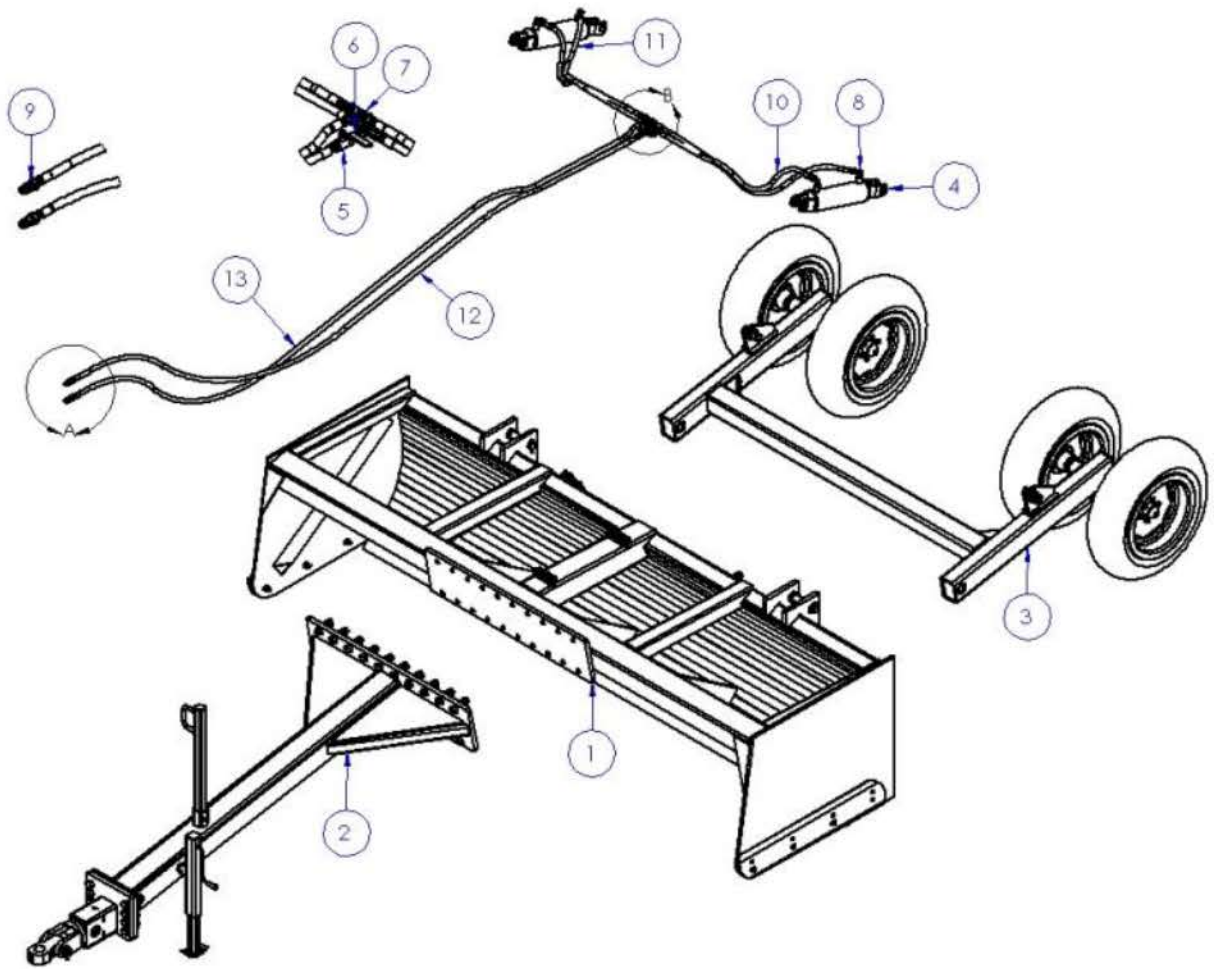
Hub Assembly, Heavy Duty

4



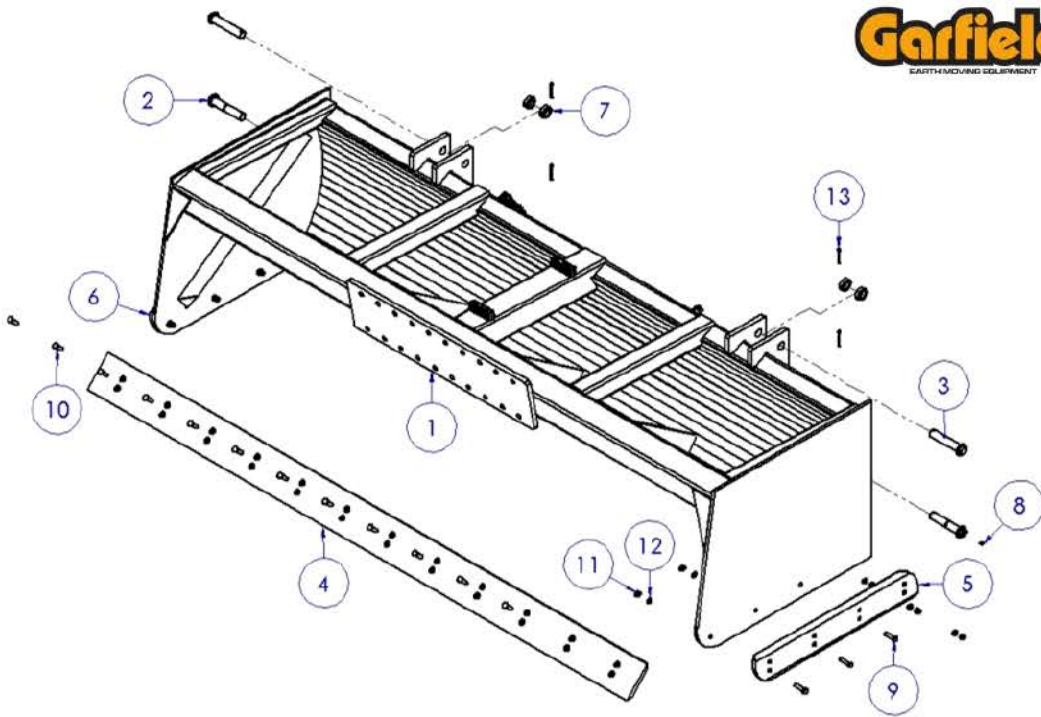
ITEM NO.	PART NO.	DESCRIPTION	ITEM NO.	PART NO.	DESCRIPTION
1	4470-6204-00	Spindle	7	4150-7480-00	Outer Race
2	4130-5066-01	Seal	8	4150-1480-00	Outer Bearing
3	4150-1916-00	Inner Bearing	9	4240-1032-04	Washer
4	4150-7916-00	Inner Race	10	4260-1100-01	Cotter Pin
5	4190-0013-25	Hub	11	4220-1019-26	Spindle Nut
6	4210-1318-95	Stud Bolt	12	4330-3044-01	Dust Cap

GHDS PARTS MANUAL

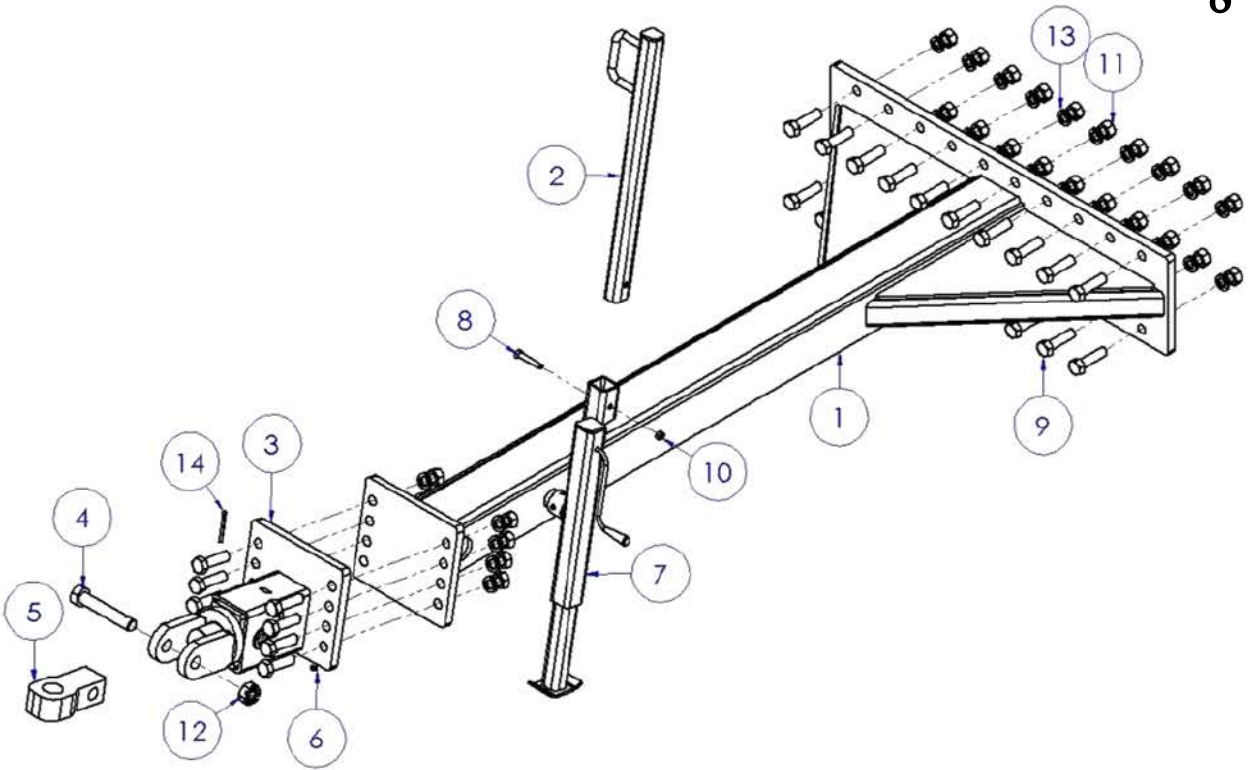


ITEM	PART #	DESCRIPTION	MODELS				
			GHDS10	GHDS12	GHDS14	GHDS16	GHDS18
1	DS10020000A	HD DRAG SCRAPER BOX - 10'	1	-	-	-	-
	DS12020000A	HD DRAG SCRAPER BOX - 12'	-	1	-	-	-
	DS14020000A	HD DRAG SCRAPER BOX - 14'	-	-	1	-	-
	DS16020000A	HD DRAG SCRAPER BOX - 16'	-	-	-	1	-
	DS18020000A	HD DRAG SCRAPER BOX - 18'	-	-	-	-	1
2	DS99200000A	HD DRAG SCRAPER TONGUE W/HITCH - 8' TO 18'	1	1	1	1	1
3	DS99310000A	HD DRAG SCRAPER STRAIGHT AXLE - 10'	1	-	-	-	-
	DS99320000A	HD DRAG SCRAPER STRAIGHT AXLE - 12'	-	1	-	-	-
	DS99330000A	HD DRAG SCRAPER STRAIGHT AXLE - 14'	-	-	1	-	-
	DS99340000A	HD DRAG SCRAPER STRAIGHT AXLE - 16'	-	-	-	1	-
	DS99350000A	HD DRAG SCRAPER STRAIGHT AXLE - 18'	-	-	-	-	1
4	SP4110-4094-01	4" X 12" X 2" STROKE HYD CYL (HCY4X12X2)	2	2	2	2	2
5	SP4110-8020-00	1/2" CARBON STEEL BALL VALVE (HBV12)	1	1	1	1	1
6	SP4120-1016-00	1/2" MP X 1/2" MP HYD ADAPTOR (HM12)	1	1	1	1	1
7	SP4120-1210-85	1/2" FP SWIVEL TEE (HTFS12)	2	2	2	2	2
8	SP4120-1016-45	1/2" MB X 1/2" FP HYD SWIVEL 90 (HMBFS912)	4	4	4	4	4
9	SP4110-6012-00	PIONEER END W/POPPET 1/2"(HEPP)	2	2	2	2	2
10	HS12X38	1/2" X 38" HYD HOSE - 8MP ENDS	2	-	-	-	-
	HS12X50	1/2" X 50" HYD HOSE - 8MP ENDS	-	2	-	-	-
	HS12X62	1/2" X 62" HYD HOSE - 8MP ENDS	-	-	2	-	-
	HS12X74	1/2" X 74" HYD HOSE - 8MP ENDS	-	-	-	2	-
	HS12X86	1/2" X 86" HYD HOSE - 8MP ENDS	-	-	-	-	2
11	HS12X48	1/2" X 48" HYD HOSE - 8MP ENDS	2	-	-	-	-
	HS12X60	1/2" X 60" HYD HOSE - 8MP ENDS	-	2	-	-	-
	HS12X72	1/2" X 72" HYD HOSE - 8MP ENDS	-	-	2	-	-
	HS12X84	1/2" X 84" HYD HOSE - 8MP ENDS	-	-	-	2	-
	HS12X96	1/2" X 96" HYD HOSE - 8MP ENDS	-	-	-	-	2
12	HS12X180	1/2" X 160" HYD HOSE - 8MP ENDS	1	1	1	1	1
13	HS12X186	1/2" X 186" HYD HOSE - 8MP ENDS	1	1	1	1	1

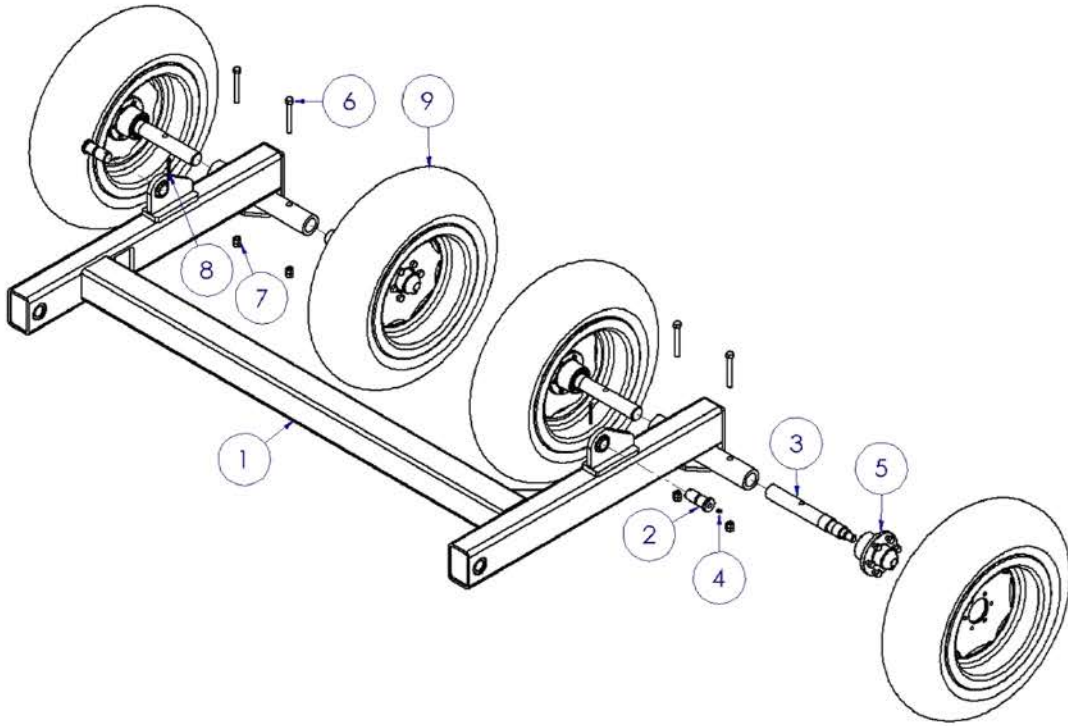
All hydraulic components are included in ITEM 3. HD DRAG SCRAPER STRAIGHT AXLE.



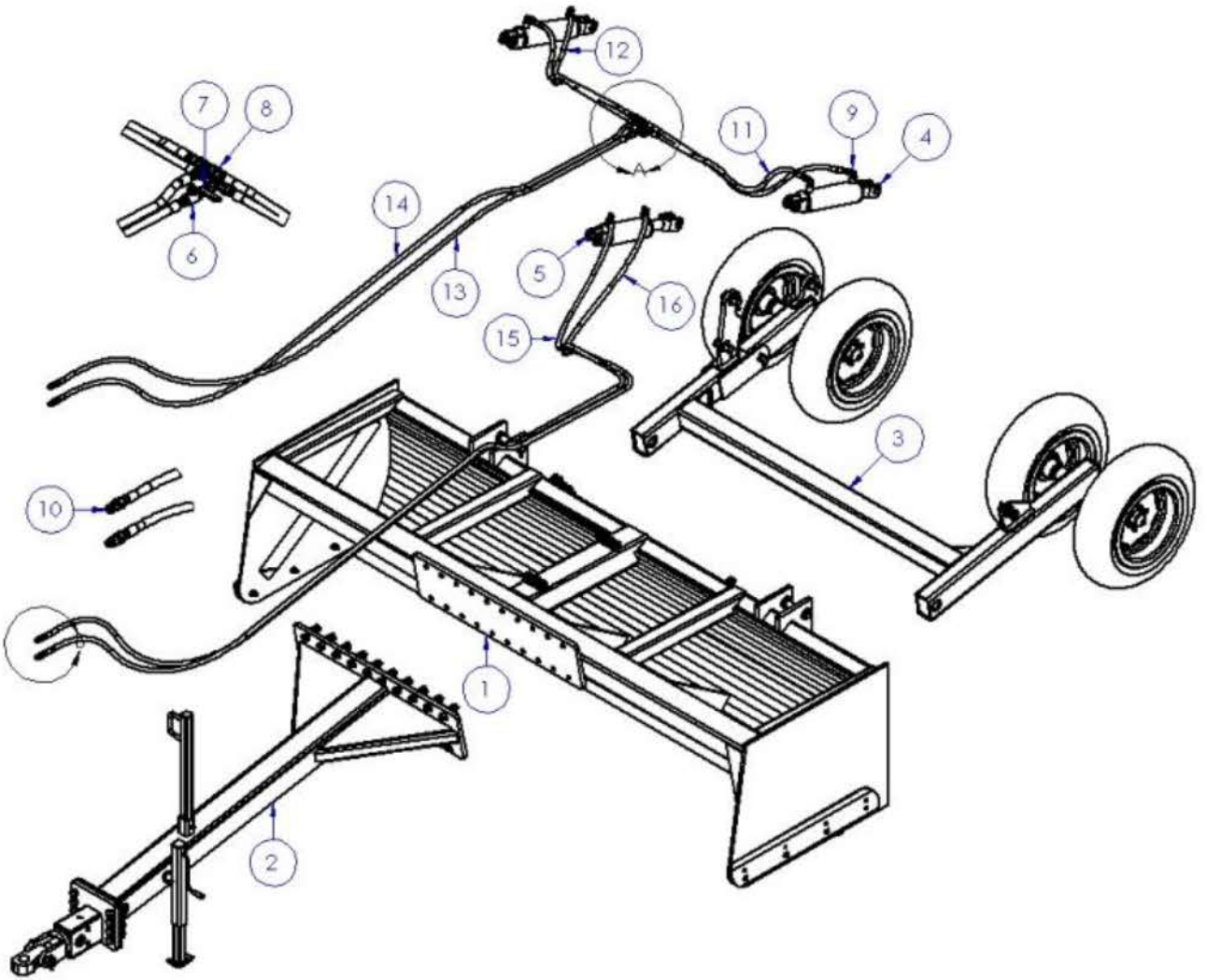
ITEM	PART #	DESCRIPTION	HD DRAG SCRAPER BOX				
			DS10020000A	DS12020000A	DS14020000A	DS16020000A	DS18020000A
1	GBDS10020100W	HD BOX -10'	1	-	-	-	-
	GBDS12020100W	HD BOX -12'	-	1	-	-	-
	GBDS14020100W	HD BOX -14'	-	-	1	-	-
	GBDS16020100W	HD BOX -16'	-	-	-	1	-
	GBDS18020100W	HD BOX -18'	-	-	-	-	1
2	GBDS08020200W	8-1/2" BORED PIN	2	2	2	2	2
3	GBDS08020300W	8-1/2" LONG PIN	2	2	2	2	2
4	GBDS10020001C	CENTER BLADE - 10FT	1	-	-	-	-
	GBDS12020001C	CENTER BLADE - 12FT	-	1	-	-	-
	GBDS14020001C	CENTER BLADE - 14FT	-	-	1	-	-
	GBDS16020001C	CENTER BLADE - 16FT	-	-	-	1	-
	GBDS18020001C	CENTER BLADE - 18FT	-	-	-	-	1
5	GBDS08020002C	LEFT BLADE, HEAVY DUTY	1	1	1	1	1
6	GBDS08020003C	RIGHT BLADE, HEAVY DUTY	1	1	1	1	1
7	GBDS08020004C	SPACER	4	4	4	4	4
8	SP4180-1030-14	1/8" GREASE ZERK (FGZ18)	2	2	2	2	2
9	SP4210-5380-01	5/8" X 2-1/2" HEX CAP BOLT 11 NC G5	6	6	6	6	6
10	SP4210-8380-11	5/8" X 2-1/2" PLOW BOLT 11 NC G8	10	12	14	16	18
11	SP4220-1012-01	5/8" NUT 11 NC (BNT58)	16	18	20	22	24
12	SP4250-1028-01	5/8" LOCK WASHER (BLW58)	16	18	20	22	24
13	SP4260-1148-01	5/16" X 3" COTTER PIN (FCP516X3)	4	4	4	4	4



ITEM	PART #	DESCRIPTION	HD DRAG SCRAPER TONGUE W/HITCH
			DS99200000A
1	GBDS99200200W	TONGUE - 8' TO 18'	1
2	GBDS99200300W	HOSE SUPPORT	1
3	GBAB16010500W	HITCH ASSEMBLY	1
4	GBCA12010009C	1-1/4" X 7" BOLT, HITCH	1
5	GBCA12010010C	LARGE 2" HOLE PULL BLOCK	1
6	SP4180-1030-14	1/8" GREASE ZERK (FGZ18)	1
7	SP4190-1082-00	15" TUBE MT JACK 5000# (JK155)	1
8	SP4210-5268-01	1/2" X 3" HEX CAP BOLT G5 (BHC12X3G5)	1
9	SP4210-5592-01	1" X 3-1/2" HEX CAP BOLT 8 NC G5 (BHC1X312)	28
10	SP4220-1008-01	1/2" NUT - 13 UNC (BNT12)	1
11	SP4220-1018-01	1" HEX NUT 8 NC (BNT1)	28
12	SP4220-1022-21	1-1/4" CASTLE NUT (BNTC114)	1
13	SP4250-1040-01	1" LOCK WASHER (BLW1)	28
14	SP4260-1148-01	5/16" X 3" COTTER PIN (FCP516X3)	1

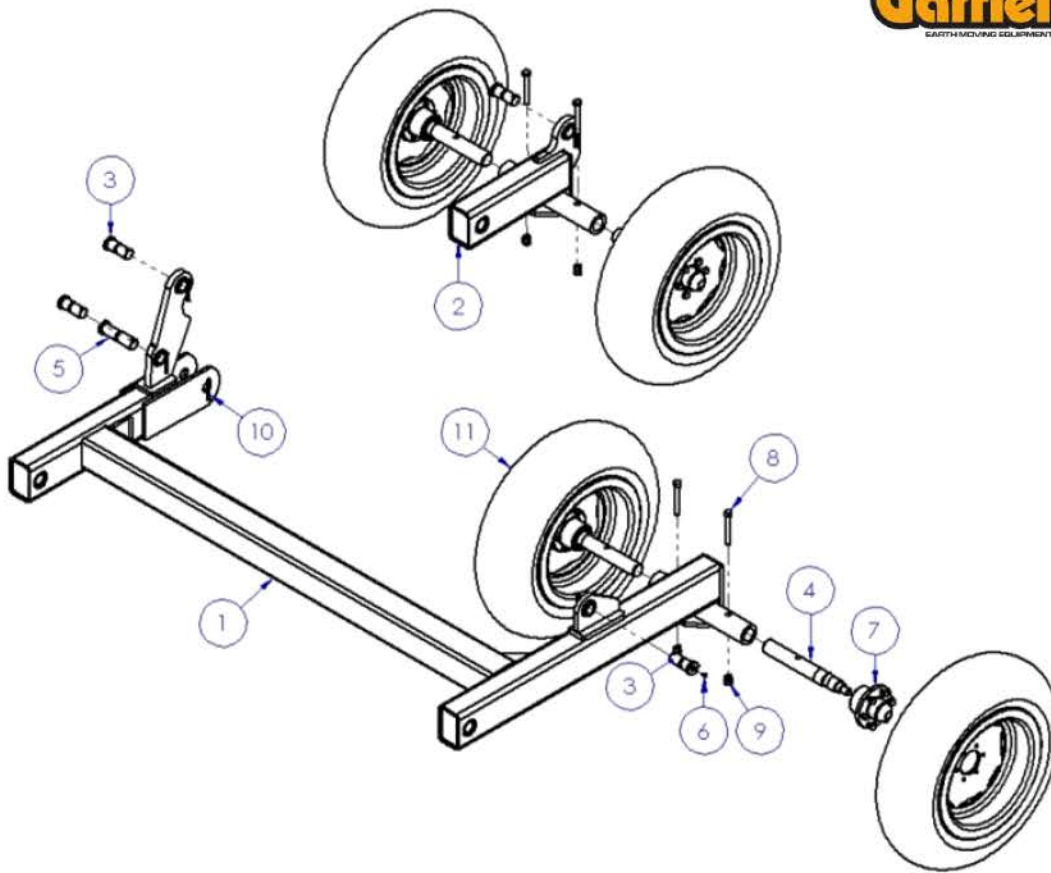


ITEM	PART #	DESCRIPTION	HD DRAG SCRAPER STRAIGHT AXLE				
			DS99310000 A	DS99320000A	DS99330000A	DS99340000A	DS99350000A
1	GBDS99310100W	MAIN FRAME - 10FT	1	-	-	-	-
	GBDS99320100W	MAIN FRAME - 12FT	-	1	-	-	-
	GBDS99330100W	MAIN FRAME - 14FT	-	-	1	-	-
	GBDS99340100W	MAIN FRAME - 16FT	-	-	-	1	-
	GBDS99350100W	MAIN FRAME - 18FT	-	-	-	-	1
2	GBCA12010901C	4" LONG PIN	2	2	2	2	2
3	GBCA05010004C	SPINDLE	4	4	4	4	4
4	SP4180-1030-14	1/8" GREASE ZERK (FGZ18)	2	2	2	2	2
5	SP4190-0013-25	614 HUB W/CUPS KIT (WHB614)	4	4	4	4	4
6	SP4210-5400-01	5/8" X 5" HEX CAP BOLT 11 NC G5	4	4	4	4	4
7	SP4220-1012-01	5/8" NUT 11 NC (BNT58)	8	8	8	8	8
8	SP4260-1148-01	5/16" X 3" COTTER PIN (FCP516X3)	2	2	2	2	2
9	SP4330-2510-01	11L X 15/8 TIRE ON 15 X 8 X 6 X 6 RIM	4	4	4	4	4



ITEM	PART #	DESCRIPTION	MODELS				
			GHDST10	GHDST12	GHDST14	GHDST16	GHDST18
1	DS10020000A	HD DRAG SCRAPER BOX - 10'	1	-	-	-	-
	DS12020000A	HD DRAG SCRAPER BOX - 12'	-	1	-	-	-
	DS14020000A	HD DRAG SCRAPER BOX - 14'	-	-	1	-	-
	DS16020000A	HD DRAG SCRAPER BOX - 16'	-	-	-	1	-
	DS18020000A	HD DRAG SCRAPER BOX - 18'	-	-	-	-	1
2	DS99200000A	HD DRAG SCRAPER TONGUE W/HITCH - 8' TO 18'	1	1	1	1	1
3	DS99410000A	HD DRAG SCRAPER TILT AXLE W/CYL. - 10'	1	-	-	-	-
	DS99420000A	HD DRAG SCRAPER TILT AXLE W/CYL. - 12'	-	1	-	-	-
	DS99430000A	HD DRAG SCRAPER TILT AXLE W/CYL. - 14'	-	-	1	-	-
	DS99440000A	HD DRAG SCRAPER TILT AXLE W/CYL. - 16'	-	-	-	1	-
	DS99450000A	HD DRAG SCRAPER TILT AXLE W/CYL. - 18'	-	-	-	-	1
4	SP4110-4094-01	4" X 12" X 2" STROKE HYD CYL (HCY4X12X2)	2	2	2	2	2
5	SP4110-4090-01	4 X 8 X 2" STROKE HYD. CYL. (HCY4X8X2)	1	1	1	1	1
6	SP4110-8020-00	1/2" CARBON STEEL BALL VALVE (HBV12)	1	1	1	1	1
7	SP4120-1016-00	1/2" MP X 1/2" MP HYD ADAPTOR (HM12)	1	1	1	1	1
8	SP4120-1210-85	1/2" FP SWIVEL TEE (HTFS12)	2	2	2	2	2
9	SP4120-1016-45	1/2" MB X 1/2" FP HYD SWIVEL 90 (HMBFS912)	6	6	6	6	6
10	SP4110-6012-00	PIONEER END W/POPPET 1/2"(HEPP)	4	4	4	4	4
11	HS12X38	1/2" X 38" HYD HOSE - 8MP ENDS	2	-	-	-	-
	HS12X50	1/2" X 50" HYD HOSE - 8MP ENDS	-	2	-	-	-
	HS12X62	1/2" X 62" HYD HOSE - 8MP ENDS	-	-	2	-	-
	HS12X74	1/2" X 74" HYD HOSE - 8MP ENDS	-	-	-	2	-
	HS12X86	1/2" X 86" HYD HOSE - 8MP ENDS	-	-	-	-	2
12	HS12X48	1/2" X 48" HYD HOSE - 8MP ENDS	2	-	-	-	-
	HS12X60	1/2" X 60" HYD HOSE - 8MP ENDS	-	2	-	-	-
	HS12X72	1/2" X 72" HYD HOSE - 8MP ENDS	-	-	2	-	-
	HS12X84	1/2" X 84" HYD HOSE - 8MP ENDS	-	-	-	2	-
	HS12X96	1/2" X 96" HYD HOSE - 8MP ENDS	-	-	-	-	2
13	HS12X180	1/2" X 160" HYD HOSE - 8MP ENDS	1	1	1	1	1
14	HS12X186	1/2" X 186" HYD HOSE - 8MP ENDS	1	1	1	1	1
15	HS12X276	1/2" X 276" HYD HOSE - 8MP ENDS	1	1	1	1	1
16	HS12X288	1/2" X 288" HYD HOSE - 8MP ENDS	1	1	1	1	1

All hydraulic components are included in ITEM 3. HD DRAG SCRAPER TILT AXLE W/CYL.



ITEM	PART #	DESCRIPTION	HD DRAG SCRAPER TILT AXLE W/CYL.				
			DS99410000A	DS99420000A	DS99430000A	DS99440000A	DS99450000A
1	GBDS99410100W	MAIN FRAME, TILT - 10FT	1	-	-	-	-
	GBDS99420100W	MAIN FRAME, TILT - 12FT	-	1	-	-	-
	GBDS99430100W	MAIN FRAME, TILT - 14FT	-	-	1	-	-
	GBDS99440100W	MAIN FRAME, TILT - 16FT	-	-	-	1	-
	GBDS99450100W	MAIN FRAME, TILT - 18FT	-	-	-	-	1
2	GBDS99400200W	COMPLEMENT, TILT	1	1	1	1	1
3	GBCA12010901C	4" LONG PIN	4	4	4	4	4
4	GBCA05010004C	SPINDLE	4	4	4	4	4
5	GBCA12011001C	6" LONG PIN	1	1	1	1	1
6	SP4180-1030-14	1/8" GREASE ZERK (FGZ18)	5	5	5	5	5
7	SP4190-0013-25	614 HUB W/CUPS KIT (WHB614)	4	4	4	4	4
8	SP4210-5400-01	5/8" X 5" HEX CAP BOLT 11 NC G5 (BHC58X5)	4	4	4	4	4
9	SP4220-1012-01	5/8" NUT 11 NC (BNT58)	8	8	8	8	8
10	SP4260-1148-01	5/16" X 3" COTTER PIN (FCP516X3)	5	5	5	5	5
11	SP4330-2510-01	11L X 15/8 TIRE ON 15 X 8 X 6 X 6 RIM (TIRE11L)	4	4	4	4	4